

MARK		TO											
		A	B	1	2	3	4	5	6	7	8	9	
		N39 10.902 W076 29.291	N39 10.117 W076 29.706	N39 10.820 W076 26.706	N39 11.165 W076 27.819	N39 11.500 W076 28.921	N39 11.690 W076 29.621	N39 09.697 W076 29.837	N39 10.845 W076 30.289	N39 11.938 W076 30.404	N39 10.212 W076 25.779	N39 12.700 W076 31.480	
FROM		YC "A"	YC "B"	G "3"	G "7"	G "9"	G "11"	R "2"	RN "2"	G "15"	G "25"	G "3"	
A			214°	104°	088°	037°	354°	211°	277°	331°	115°	328°	
			0.85	2.01	1.18	0.67	0.83	1.28	0.78	1.35	2.81	2.47	
B		034°		084°	066°	035°	014°	205°	339°	355°	Do Not Use	343°	
		0.85		2.43	1.81	1.52	1.58	0.43	0.86	1.90		2.93	
1		284°	265°		302°	302°	302°	255°	281°	302°	141°	307°	
		2.01	2.43		0.93	1.84	2.50	2.65	2.80	3.09	0.90	4.15	
2		268°	246°	122°		302°	302°	236°	271°	302°	132°	309°	
		1.18	1.81	0.93		0.92	1.58	2.10	1.96	2.15	1.80	3.24	
3		217°	215°	122°	122°		302°	212°	250°	302°	129°	312°	
		0.67	1.52	1.84	0.92		0.65	1.91	1.26	1.25	2.80	2.32	
4		174°	194°	122°	122°	122°		193°	218°	302°	128°	316°	
		0.83	1.58	2.50	1.57	0.64		2.00	0.98	0.58	3.30	1.70	
6		097°	159°	101°	091°	070°	038°	172°		006°	111°	344°	
		0.78	0.86	2.80	1.95	1.26	0.98	1.18		1.10	3.60	2.05	
7		151°	175°	122°	122°	122°	122°	178°	186°		127°	323°	
		1.35	1.90	3.09	2.15	1.25	0.58	2.27	1.10		4.00	1.12	
8		295°	Do Not Use	321°	312°	309°	308°	Do Not Use	291°	307°		311°	
		2.81		0.90	1.80	2.80	3.30		3.60	4.00		5.10	
9		148°	163°	127°	129°	132°	136°	167°	164°	143°	131°		
		2.47	2.93	4.16	3.24	2.32	1.70	3.25	2.06	1.12	5.10		
						Course in Magnetic Degrees						Distance in Nautical Miles	

rev 5/9/11

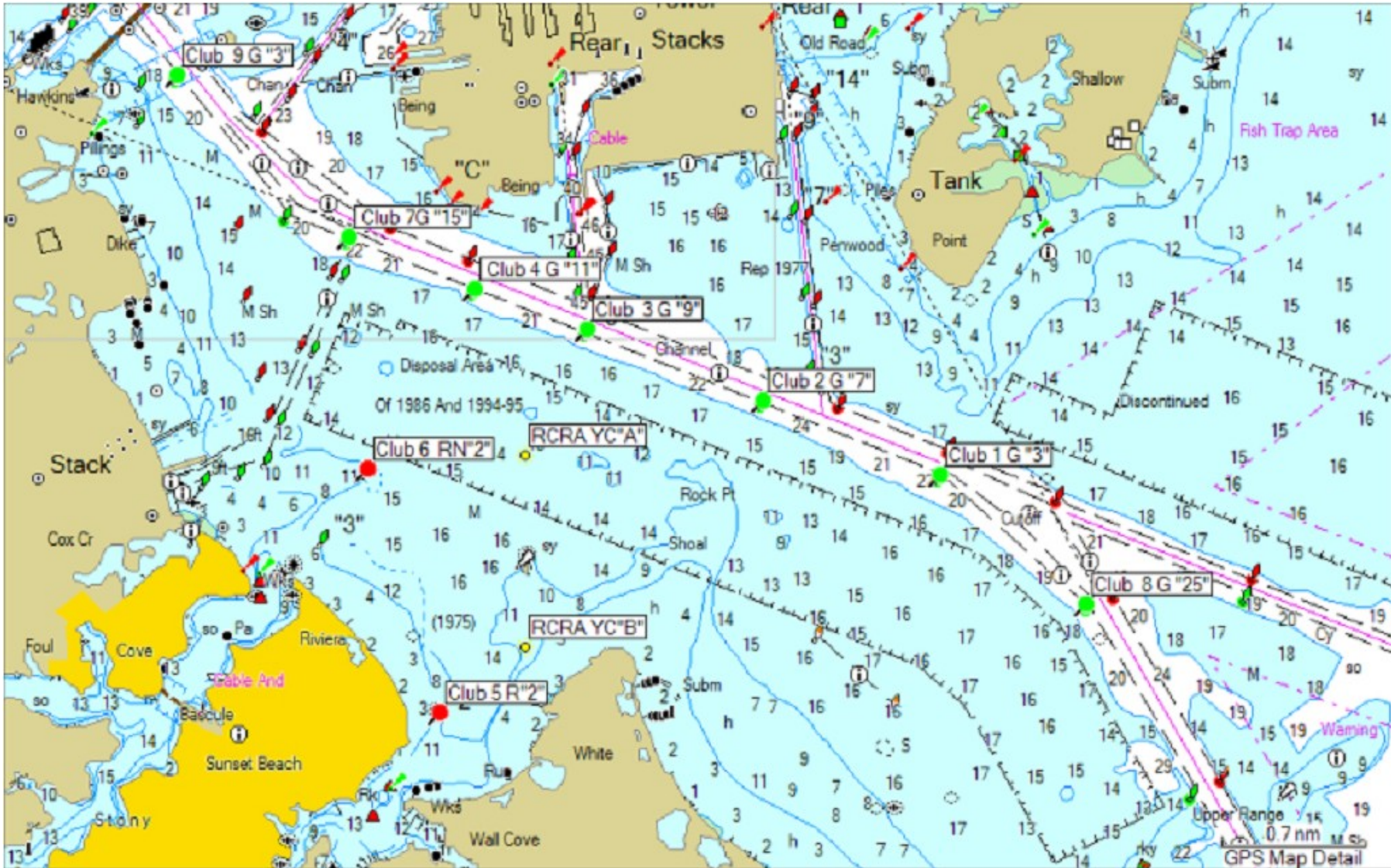
STANDARD COURSES

marks in red - leave to port

marks in green - leave to starboard

Wind Direction		Avg. Wind Speed		Course	Start	RCRA Mark		RCRA Mark		RCRA Mark		Total Dist
						RCRA Mark	RCRA Mark	RCRA Mark	RCRA Mark			
NE	16°	63°	<8 knots	"AA"+"K"	A	3	4	5 (finish)			3.32	
			8-12 knots	"AA"	A	3	B	A	5 (finish)		4.32	
			>12 knots	"AA"+"L"	A	3	B	3	5 (finish)		5.62	
E	64°	96°	<8 knots	"BB"+"K"	A	2	A	5 (finish)			3.64	
			8-12 knots	"BB"	A	2	6	5 (finish)			4.32	
			>12 knots	"BB"+"L"	A	2	6	3	5 (finish)		6.31	
ESE	97°	109°	<8 knots	"CC"+"K"	A	2	B	5 (finish)			3.42	
			8-12 knots	"CC"	A	1	B	5 (finish)			4.87	
			>12 knots	"CC"+"L"	A	1	6	A	5 (finish)		6.87	
SE	110°	162°	<8 knots	"DD"+"K"	A	1	5 (finish)				4.66	
			8-12 knots	"DD"	A	8	1	5 (finish)			6.36	
			>12 knots	"DD"+"L"	A	8	2	5 (finish)			6.71	
S	163°	209°	<8 knots	"FF"+"K"	A	B	4	5 (finish)			4.43	
			8-12 knots	"FF"	A	B	7	5 (finish)			5.02	
			>12 knots	"FF"+"L"	A	B	9	5 (finish)			7.05	
SW	210°	242°	<8 knots	"GG"+"K"	A	B	A	5 (finish)			2.98	
			8-12 knots	"GG"	A	B	3	5 (finish)			4.28	
			>12 knots	"GG"+"L"	A	B	3	B	A	5 (finish)	6.02	
W	243°	274°	<8 knots	"HH"+"K"	A	6	2	5 (finish)			4.83	
			8-12 knots	"HH"	A	6	B	2	5 (finish)		5.55	
			>12 knots	"HH"+"L"	A	6	B	2	6	5 (finish)	6.59	
WNW	275°	287°	<8 knots	"JJ"+"K"	A	6	A	6	5 (finish)		3.52	
			8-12 knots	"JJ"	A	6	2	A	5 (finish)		5.19	
			>12 knots	"JJ"+"L"	A	6	2	6	5 (finish)		5.87	
NW	288°	317°	<8 knots	"KK"+"K"	A	7	3	5 (finish)			4.51	
			8-12 knots	"KK"	A	7	2	5 (finish)			5.60	
			>12 knots	"KK"+"L"	A	7	2	4	5 (finish)		7.08	
NNW	318°	330°	<8 knots	"MM"+"K"	A	7	5 (finish)				3.62	
			8-12 knots	"MM"	A	9	5 (finish)				5.72	
			>12 knots	"MM"+"L"	A	9	A	5 (finish)			6.22	
NNW	331°	341°	<8 knots	"NN"+"K"	A	7	A	5 (finish)			3.98	
			8-12 knots	"NN"	A	7	B	A	5 (finish)		5.38	
			>12 knots	"NN"+"L"	A	7	B	4	5 (finish)		6.83	
N	342°	15°	<8 knots	"OO"+"K"	A	4	6	A	5 (finish)		3.87	
			8-12 knots	"OO"	A	4	A	4	5 (finish)		4.49	
			>12 knots	"OO"+"L"	A	4	B	4	5 (finish)		5.99	

NOTE: Courses may be shortened to any mark of the course. Always cross the finish line in the direction from the previous mark.



Rock Creek Racing Association Mark Chart (do not use for navigation)